

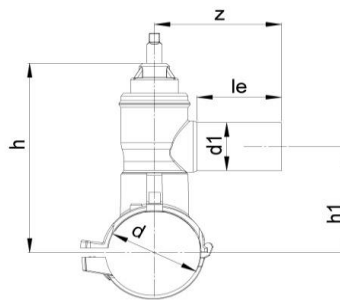
## EF TAPPING VALVE

04 Update - 02/2023

### TECHNICAL DATA

Article No	001 117 2072 0132
d (mm)	125
d1 (mm)	32
le (mm)	74
h (mm)	254
h1 (mm)	145
Z (mm)	126
L (mm)	140
Weight (Kg)	2,480
Box Quantity (pcs)	5
Box Dimension (cm)	55x30,5x37

### INJECTION MOULDED



### IDENTIFICATION OF PRODUCT

D(mm)	125-32
SDR	11
RAW MATERIAL	PE 100
PRESSURE CLASS	16 Bar Water
TRADEMARK	NTG
EXECUTION	Injection Moulded
STANDARD	EN 12201-3

### EF SPECIFICATION

WELDING VOLTAGE	40 V
RESISTANCE	7.0 $\Omega$
WELDING TIME	130 Sec.
COOLING TIME	15 Min.
WINDING TYPE	Monofilar
WELDING BARCODE	



142007321253407005130118

SPECIFICATION	<p>Suitable for SDR11....17 pipe</p> <p>4 mm pin connectors</p> <p>Long fusion outlet</p> <p>Opening on the spanner is 18 turns</p> <p>Wrench 12 mm</p> <p>The valve is closed clockwise</p>
---------------	--

Tolerance on diameters and thickness according to the standards. The other dimensions are specialized. Tolerance  $\pm 5\%$ . NTG PLASTIK reserves all the right to change any information without giving prior notice. The production, distribution and utilization of this document without explicit authorization is prohibited.